



Tronchetti
PLMA - Amsterdam - project: AirBag



Aedes - MapiC - Cannes



Ariana - Cersaie - Bologna
project: Genius Progetti



Ceramica Flaminia - Cersaie - Bologna
project: G. Cappellini



for updates visit our website
www.crossmetal.it



designed and produced in Italy by

CROSSMETAL SRL
VIA PACINOTTI 58B - 20094 CORSICO (MI) ITALY
TEL. +39 02 97381431 - INFO@CROSSMETAL.IT

QUADRA 8

STRUCTURAL ORTHOGONAL SYSTEM WITH RAPID CONNECTION



CROSSMETAL

SYSTEM

QUADRA 8

ORTHOGONAL SYSTEM WITH RAPID CONNECTION

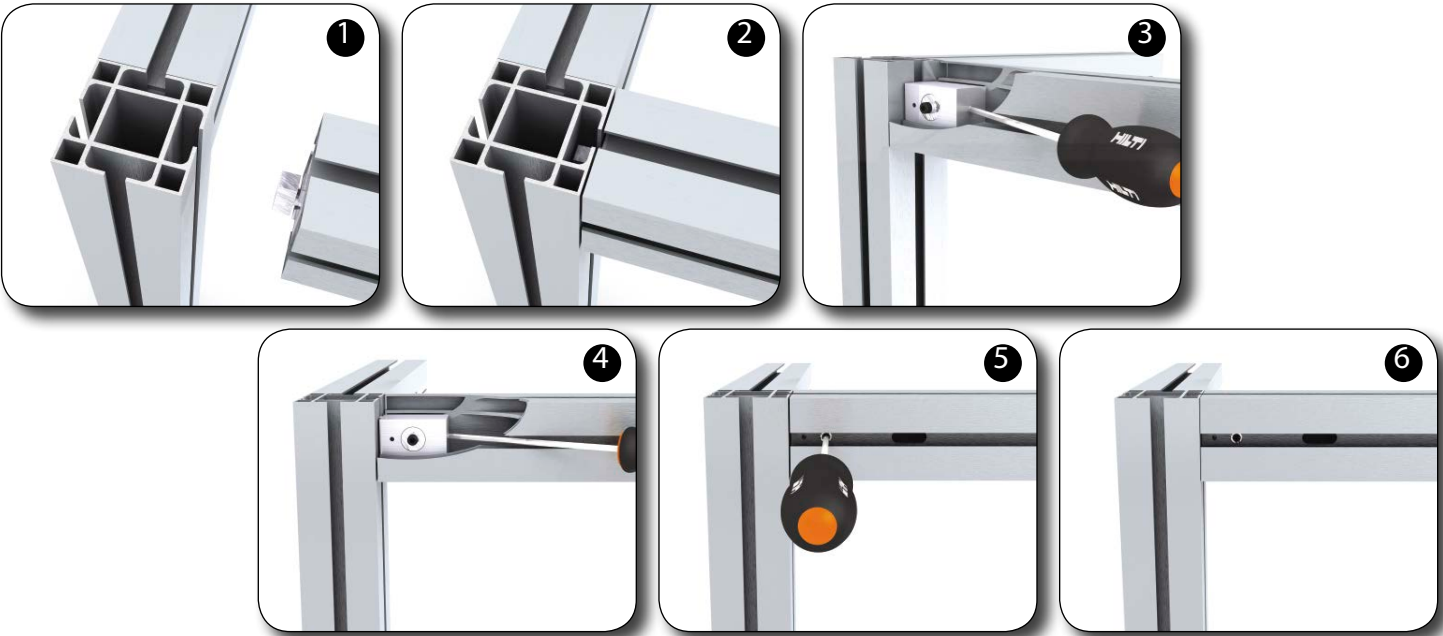
Quadra 8 is a simple and versatile structural orthogonal system, easy to be assembled, particularly right to be used for the equipment of stands.

It's composed by aluminium columns and beams, both with a 80x80 cm section, united through mechanic blocks with rapid connection.

Inside the block there is a steel rotating pin that is in vertical position when the column is united to the beam (picture 1/2).

Through an Allen wrench with spherical head the internal connection pin receives a rotation of 90 degrees (picture 3/4) and then the grip Allen wrench is tightened (picture 5) until the column completely adheres to the beam (picture 6).

On the four sides of the profile there are the seats for coupling and joints.



1 - MECHANICAL FEATURES

Drawn bars in natural workhardened aluminium UNI 6060/T5

$$E = 68500 \text{ N/mm}^2$$

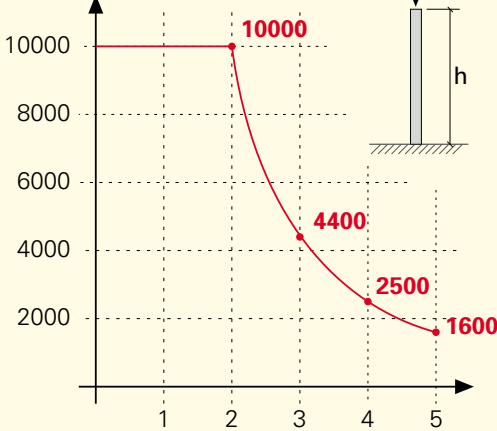
$$\partial r = 290 \text{ N/mm}^2$$

$$\Delta 15\% = 12 \div 18$$

$$\partial^{\text{amm}} = \partial r / 2,4 = 120 \text{ N/mm}^2$$

3 - STUD CAPACITY

Capacity kg/lm.



2 - GEOMETRICAL FEATURES

$$\Delta = 1535,6 \text{ mm}^2$$

$$J_x = J_y = 1069642 \text{ mm}^4$$

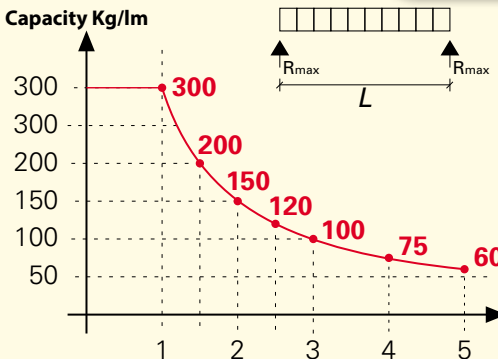
$$W_x = W_y = 26741 \text{ mm}^3$$

Laboratory tests have confirmed the material quality.

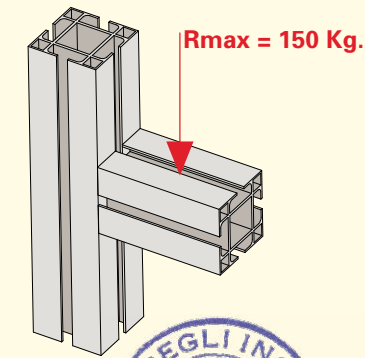
4 - BEAM CAPACITY

(only for slanting – the stud is equivalent to $R_{\text{max}} = 150\text{Kg.}$)

Capacity Kg/lm



CAPACITY WHILE SLANTING



Glazed Profile

This profile is inserted in the slot of the column or beam and allows the mounting of glass panels of various thicknesses with gaskets.



Keku Joint

A bayonet joint allows to coat the structure on both sides, leaving no visible screws.



360° Joint

It's a swivel steel attack that allows you to combine non-orthogonal beams and columns.



Curtain Joint

Through a solid spruce tucked into the slot of the beam you can staple tensioned curtains.



Adjustable Foot

It's made of steel, with adjustable screw inserted in a bushing in the column.



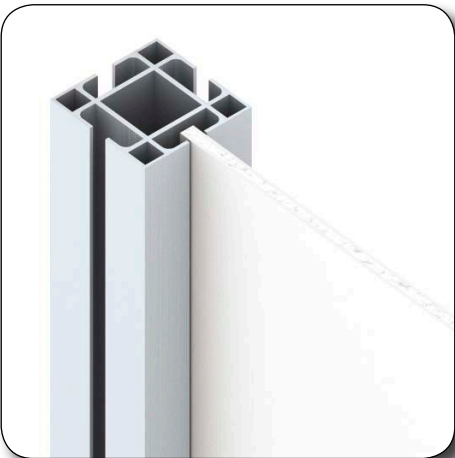
Closing Cap

Made of anodized aluminum, is inserted by pressure.



Inserting Panels

In the 13mm slot you can insert various types of lightweight panels.



Spotlight Connection

Through various accessories, you can mount almost any kind of spotlight.

