

# QUADRA 10

STRUCTURAL ORTHOGONAL SYSTEM

for updates visit our website  
**[www.crossmetal.it](http://www.crossmetal.it)**



designed and produced in Italy by

**CROSSMETAL SRL**  
VIA PACINOTTI 58B - 20094 CORSICO ( MI ) ITALY  
TEL. +39 02 97381431 - [INFO@CROSSMETAL.IT](mailto:INFO@CROSSMETAL.IT)

**CROSSMETAL<sup>®</sup>**  
**SYSTEM**



# QUADRA 10 STRUCTURAL ORTHOGONAL SYSTEM

Quadra 10 is a simple structural orthogonal system, easy to be understood, particularly right to be used for equipment of stands, shops, events etc...

It's composed by aluminium columns and beams, both with a 10x10 cm section, united through joints.

On the 4 sides of the profile there are the seats for coupling and joints which, if not used, are covered with a profile.

The particular rib of the extruded element can create 5 m ports, but putting upon beams united through props it is possible to realize a "articulated beam" and to reach a 7 m port between the columns.

It's also possible to use the structure slanting (like in our stand), cutting the columns and the beams with a chosen slant.

The clean drawing and the easy application make this system ideal for every designer.



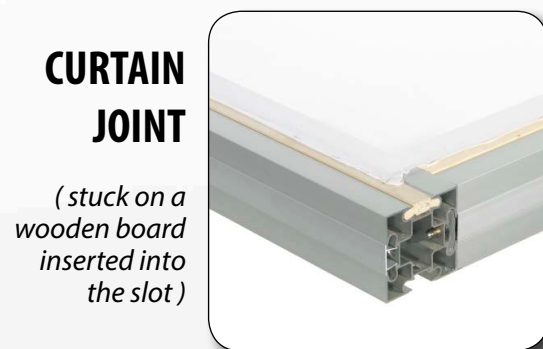
**SLANTING  
JOINT**

*(in every degree)*



**GLASSES AND PANELS  
JOINT**

*(The same connection can host a Panel of up to 20 mm thick glass or through a seal up to 12 mm)*



**CURTAIN  
JOINT**

*(stuck on a wooden board inserted into the slot)*

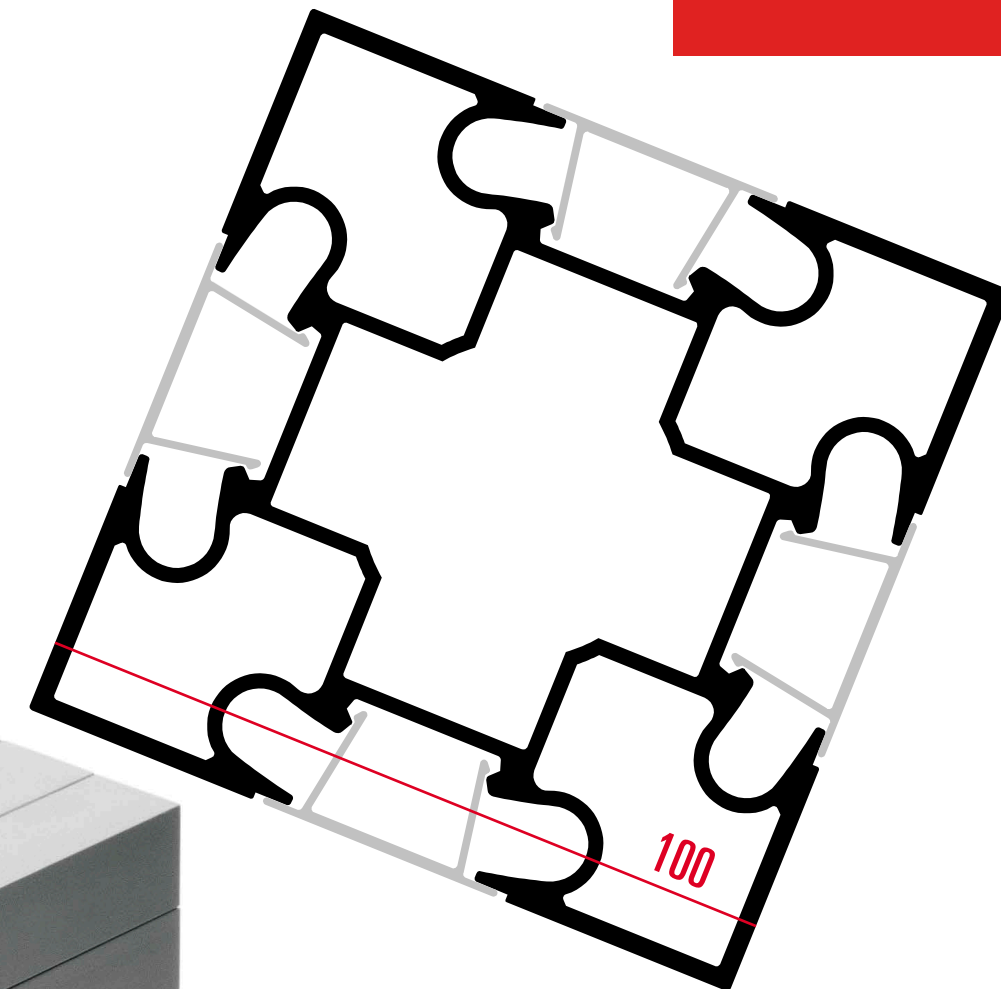


**COVERING  
STRUCTURE  
DETAIL**

*(The panels are attached to the L sheet)*



**FLOORING  
JOINT**



**WOODEN  
SLATS  
JOINT**

*(is a plug with a hole in step with the sleeves to hold the strips)*



**SPOTLIGHTS  
JOINT**

*(the various couplings can attack all types of spotlights)*



**ADJUSTABLE  
FOOT**



**SPIDER  
JOINT**



**Toscotec**  
Tissue World - Miami  
Project: AirBag

**Edilgres**  
Cersaie - Bologna  
Project: Genius Progetti



**Sincrosoft**  
NAMM - Los Angeles  
Project: Navone Associati



**Aedes**  
EIRE - Milano



Perini - CMM - Chicago - Project: ai Granai



**Aqualife**  
Cersaie - Bologna



**Raat**  
Living Luce - Milano

**Asio First Atlantic**  
Eire - Milano - progetto: Systematica



"ProntoChiambrelli" - P.za Cordusio a Milano



**Mostra "Amici dei Navigli"**  
Castello di Pavia  
Project: Studio Malara



**Ultraflex**  
Salone Nautico - Genova - Project: Navone Associati



**Epson**  
Smau - Milano  
Project: Omniadesign



# CHALET MODULAR ALUMINIUM OUTDOOR PAVILLON

Quadra10 is particularly suitable for the construction of small and large pavilions outside, because it is structurally very reliable and easy assembly and disassembly. Its modularity allows you to change depending on the pavilion of the 'area of exposure. It' already been used and tested by our customers around the world, from Britain to South Africa, Malaysia to Chile, even in extreme situations, but always with good results. All components are removable, so as to obstruct a minimum space during transport.

The structure ( you can see an example in the picture below ) is completed by a roof, perimeter walls, glass, windows and doors, floor, etc.. ...

The characteristics of these supplements can change according to needs of the customers or for the environmental conditions in which it is used.

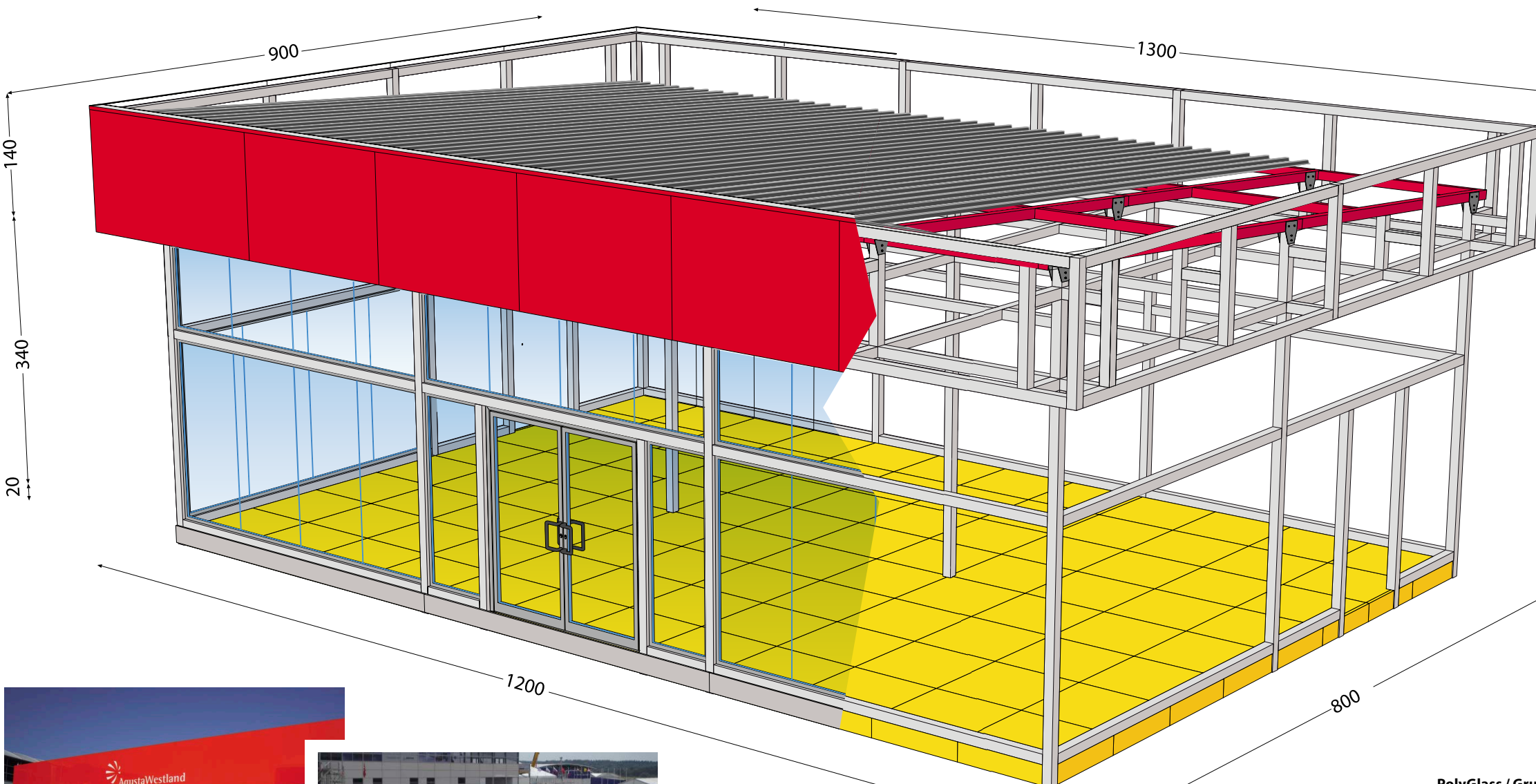
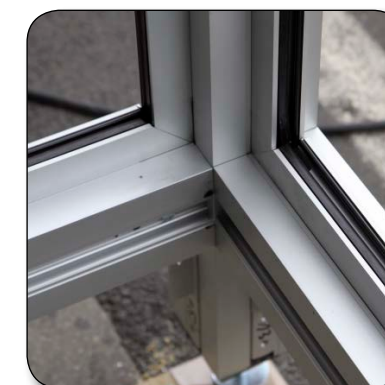


**ARTICULATED  
BEAM  
COUPLING**

**FOOT AND  
PLATE**



**GLASS  
PROFILE**



**PolyGlass / Gruppo MAPEI**  
SAIE - Bologna  
made by Gruppo Arredo Stand



**Agusta / Finmeccanica**  
International Airshow - Farnborough ( UK )  
made by Buratti srl  
Project : Studio Gris



**Unexpected Israel**  
Roadshow in Duomo, Milan  
Project : Berenice